

A woman with voluminous, curly red hair is seated in a chair, wearing a strapless, floor-length gown. The gown is a soft pink color with a smooth, satin-like upper half and a voluminous, multi-layered tulle skirt. She is positioned in the center of an ornate, dark wood doorway with intricate carvings. Above the doorway, a large, multi-tiered crystal chandelier hangs from the ceiling. The background behind the woman is a soft, blue sky. The overall mood is elegant and classic.

SAREH NOURI
NEW YORK
SPRING 2018



SAREH NOURI

NEW YORK

SPRING 2018

WWW.SAREHNOURI.COM



SAREH NOURI

NEW YORK

Bridal Gowns and Veils: SAREH NOURI
www.sarehnouri.com

Select Laces: HOUSE OF SOPHIE HALLETTE
www.sophiehallette.com

Photographer: MANI ZARRIN
www.manizarrin.com

Headpieces: JENNIFER BEHR
www.jenniferbehr.com

Floral: LAURA CLARE DESIGN
www.lauraclaredesign.com

Hair by Creative Director: YOAV TAUBER
www.joseebernj.com

Makeup: TIFFANY DELLIS
www.joseebernj.com











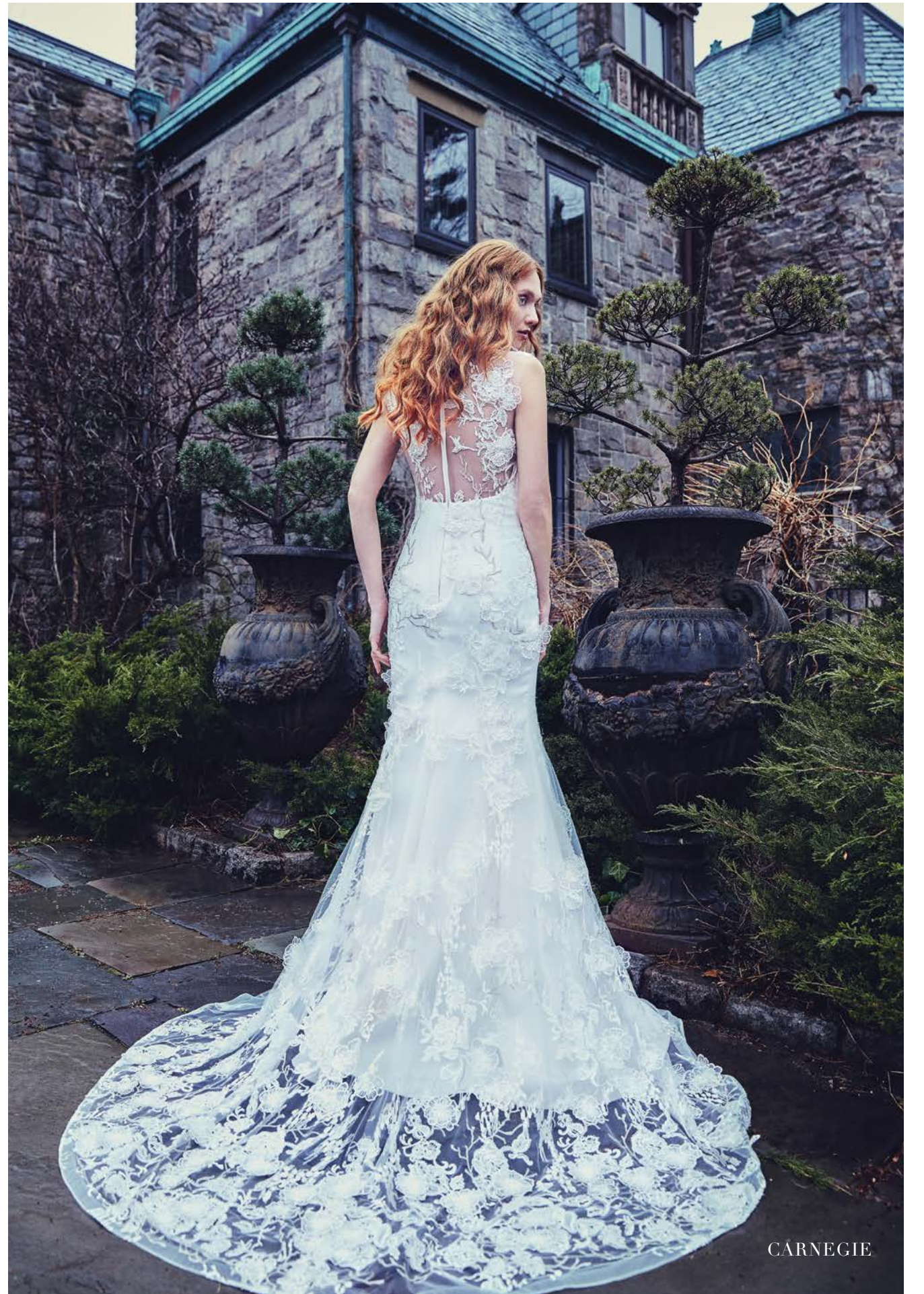






















MERCER







SAREH NOURI

NEW YORK

SPRING 2018

WWW.SAREHNOURI.COM

SAREH NOURI
NEW YORK
SPRING 2018